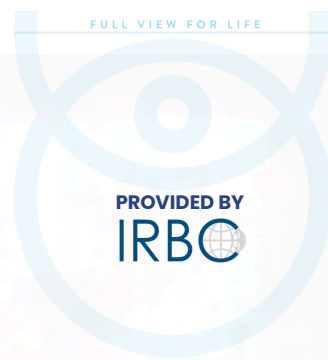


# DEPICT HEALTH

Cloud-based coordinated communication for retinoblastoma

## PATIENT-CENTERED COORDINATION

across institutions and jurisdictions



### Why DEPICT HEALTH is needed?

Fragmented communication impedes institutional patient care and increases clinical risk.

- Children with retinoblastoma receive care in **multiple institutions over many years**
- Medical records remain **siloed across hospitals**
- Families become the **primary coordinators of their child's medical information**
- Fragmentation increases **clinical risk, inefficiency, and family burden**

### How DEPICT HEALTH helps?

DEPICT HEALTH connects clinicians, families and hospitals through a shared clinical timeline.

- **Secures clinician-patient communication** across the patient journey
- **Point-and-click access** to treatment and monitoring events
- **Shared visibility of patient history across institutions** over time
- **Complements existing hospital EMR systems**
- **Orients patients, families, and clinicians**

### Value Across the Circle of Care



#### Clinicians

Understand patient history  
Safe handoffs between teams  
Less time chasing records



#### Families

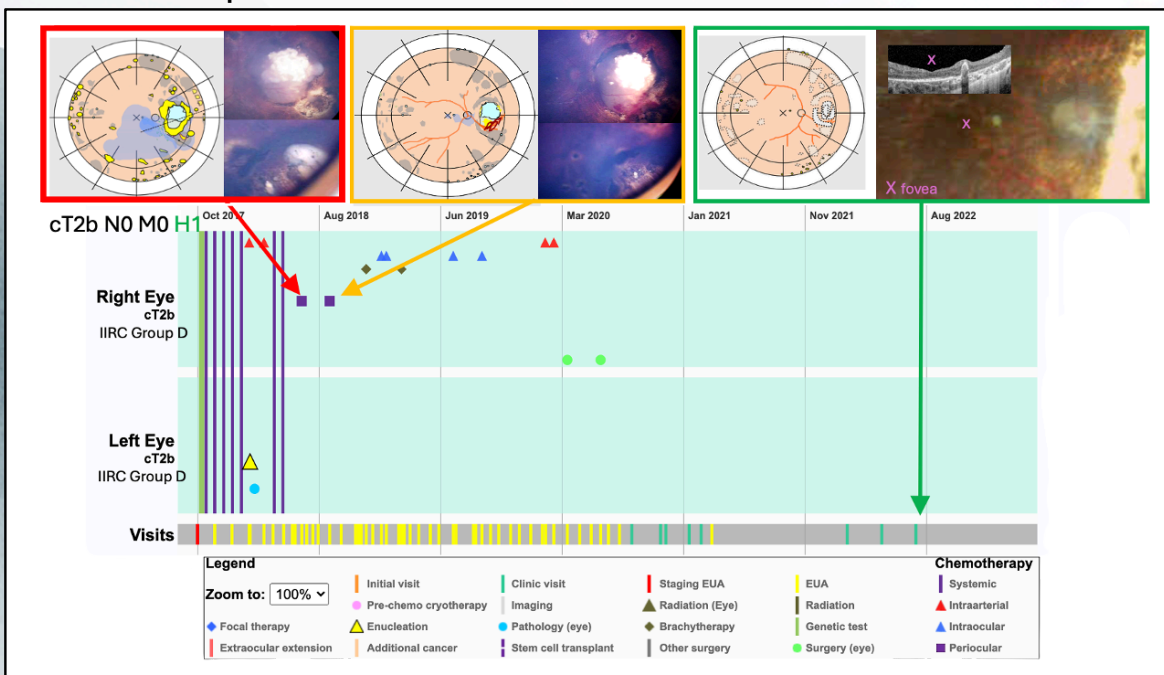
Transparent journey  
Reduced coordination  
Options understood



#### Hospitals

Operational efficiency  
Reduced duplication  
Burden co-ordinated

### Disease-specific Electronic Patient Illustrated Clinical Timeline



Intuitive visual summary of patient clinical journey over time and across institutions